



Accurate Fluoride Monitoring for Regulatory Confidence



Hach's EZ3008sc Fluoride Analyzer



Hach's EZ3508sc Fluoride Analyzer

Accurate fluoride monitoring is essential for public health protection and regulatory compliance, including guidance established by the U.S. Environmental Protection Agency (EPA). However, fluoride measurement is often impacted by changing ionic strength, temperature variation, and matrix interferences, making consistent results difficult with traditional ISE analyzers.

The EZ sc Series Fluoride Analyzers are designed to deliver stable, defensible fluoride measurements across both stable and complex water matrices, with minimal manual intervention.

Designed for Real-World Fluoride Applications:

- Automated standard addition available to compensate for matrix effects
- Reliable performance in drinking water, fluoridation systems, and industrial wastewater
- Temperature controlled measurement minimizes drift
- Automated workflows reduce operator dependency
- Discontinuous Direct measurement for stable, predictable water conditions
- Continuous monitoring supports confident compliance and process control

Regulatory Standards for Fluoride

To meet international and local regulations, fluoride levels in drinking water and fluoridation process control must be closely monitored. U.S. EPA guidance recommends fluoride levels below 2.0 mg/L, while the EU drinking water limit is 1.5 mg/L. Wastewater discharge limits vary by industry and application. Monitoring fluoride levels supports compliance, protects public health, and helps avoid operational risk.

Stable Fluoride Monitoring across Diverse Applications

The EZ sc Series Fluoride Analyzers, based on Ion Selective Electrode (ISE) technology, are designed to deliver dependable fluoride monitoring across municipal and industrial water systems. By managing drift, fouling, and matrix effects, the EZ sc Series provides reliable data with less manual intervention while supporting confident regulatory compliance and process control.

To meet the distinct challenges of different water matrices, the EZ sc Series offers two models:

- **EZ3008sc Fluoride Analyzer:** Designed for applications with stable and predictable water chemistry, providing straightforward, reliable fluoride measurement using direct ISE technology. Precision and stability are enhanced through temperature controlled measurement. Conforms to EPA 9214 and ASTM D1179.
- **EZ3508sc Analyzers:** Offers two selectable measurement modes – direct measurement and fully automated standard addition – to ensure accurate fluoride results in waters with variable ionic strength or interfering substances. Automated standard addition makes this model well suited for industrial and challenging applications.

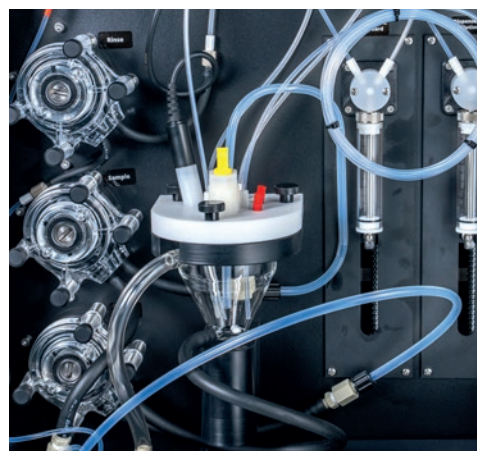
The Right Measurement for Reliable Results

Accurate fluoride monitoring is critical for compliance and process control. The EZ sc Series delivers stable, continuous fluoride measurements despite changing water conditions, reducing manual intervention, minimizing fouling and drift, and enabling confident decisions without constant maintenance.

- **Integrated analyzer and control platform:** Built-in control and display eliminate the need for a separate controller, simplifying installation and daily operation.
- **Reduced manual effort:** Automated workflows and proactive system alerts reduce routine checks, allowing operators to focus on higher-value tasks.
- **Streamlined operations:** Preconfigured solutions and guided maintenance workflows help reduce unplanned downtime and support consistent compliance and process control.
- **Rugged, reliable performance:** Designed for challenging environments, the EZ sc Series maintains stable operation as sample composition fluctuates.
- **Operational confidence:** Fewer on-site interventions and automated workflows help reduce operational risk and avoid unexpected disruptions.

Find the Analyzer That Fits Your Application

Selecting the optimal model is about matching the analyzer to your application's demands. We offer two distinct models to match your specific operational environment.



Application Consideration	EZ3008sc	EZ3508sc
Best suited for	Treated or naturally clean water with predictable chemistry	Variable or complex water (e.g., industrial process water, wastewater, surface water)
Typical application	Municipal drinking water systems or routine checks as per EPA 9214 and ASTM D1179	Industrial process water or surface water systems with changing composition
Measurement approach	Straightforward, direct measurement	Robust measurement that compensates for matrix variations
Operating conditions	Suitable for stable conditions	Ensures consistent results in challenging environments

Take the Next Step – We're Here to Help

Not sure which analyzer matches your application? Let our experts guide you. Request a complimentary application review or consultation to select the best fluoride monitoring solution for your facility. Reach out today and gain confidence in every measurement.



World Headquarters: Loveland, Colorado USA | hach.com

United States 800-227-4224 fax: 970-669-2932 email: orders@hach.com
Outside United States 970-669-3050 fax: 970-461-3939 email: intl@hach.com

©Hach Company, 2026. All rights reserved.

In the interest of improving and updating its equipment, Hach Company reserves the right to alter specifications to equipment at any time.

DOC063.53.30663.Mar26